



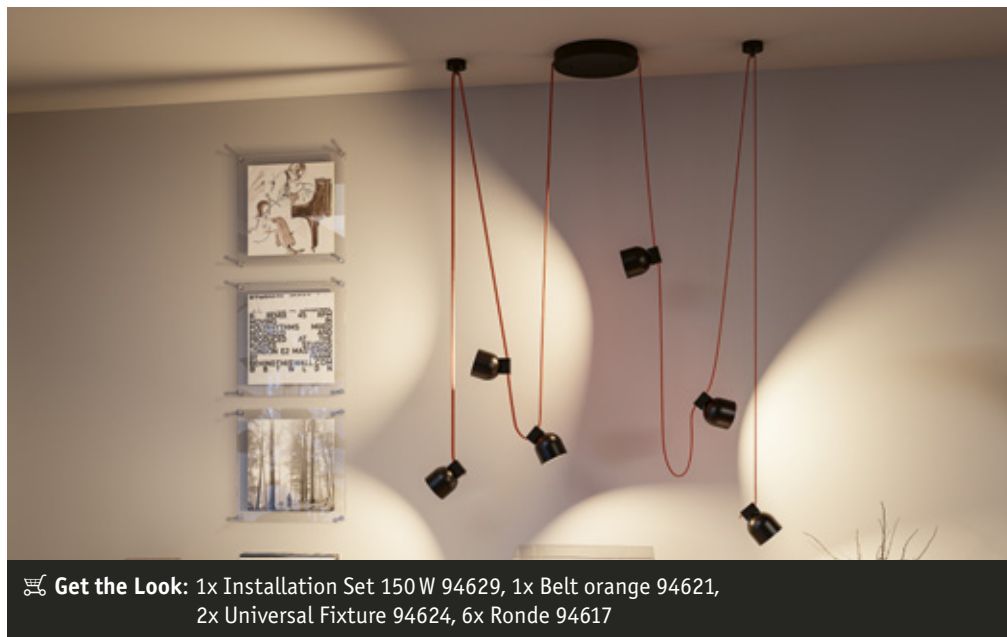
# P

Paulmann

## ULine belt system

Your one-of-a-kind light in any size space





**Get the Look:** 1x Installation Set 150W 94629, 1x Belt orange 94621, 2x Universal Fixture 94624, 6x Ronde 94617

## Uline belt system

Your one-of-a-kind light in any size space

Discover ULine – our fascinating 48 V lighting system that brings life to every dimension of the space in your home!

Would you like to transform walls, ceilings and floors into a breathtaking lighting experience? This system uses delicate belts, which can be freely tensioned in the room and offer limitless flexibility.

The belts with internal power routing can be individually shortened with scissors, so they can be perfectly adapted to any space. The result is a customised lighting concept that offers maximum design freedom.

Whether as accent lighting or as a central design element – pendant luminaires, light spheres, spots or light bars can be freely positioned along the belts – entirely according to your personal preferences.

This is how ULine sets completely new standards in the design of modern spaces for living and working.



**Get the Look:** 1x Installation Set 150 W 94629, 1x Belt black 94619, 1x Ronde 94617, 2x Ball 94616, 2x Straight Fixture 94622

## It's so easy to plan your customised ULine belt system

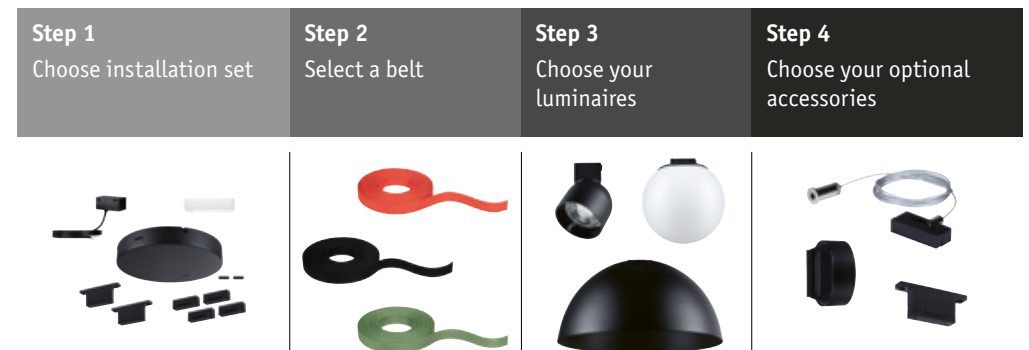
The belt can be rolled out easily, shortened to any length as needed, connected with the installation set and distributed in all room dimensions with various holders.

You will find belt holders for wall, ceiling or floor mounting.

And we have even more clever accessories for you:

Adapters for suspending the belt (pendant adapter), end caps to cover shortened belts and clamps for loop installations.

Now all you have to do is place your luminaires on the belt and your personalised lighting installation is ready to go!





**Get the Look:** Left: 1x Starter Set Bol 94633  
 Right: 1x Installation Set 150 W 94629, 1x Belt black 94619,  
 1x Straight Fixture 94622, 2x Light Bar 94613

## ULine installation sets

Get creative when choosing belt colours and luminaires

Choose from the two different installation sets! They are available with either a 60 W or 150 W transformer – depending on how many luminaires you want to use. Holders, feed and cover are also included so you can get started straight away.

With your favourite colour for the strap and your choice of luminaires, you can transform the ULine strap system into a unique work of art that perfectly matches your style.

Tension the belt straight and parallel to the ceiling, let it hang loosely between two brackets or run tightly down the wall. The choice is yours!



**Installation Set 60 W**  
 max. 60 W, 48 V, 60 VA  
 94628



**Installation Set 150 W**  
 max. 150 W, 48 V, 150 VA  
 94629



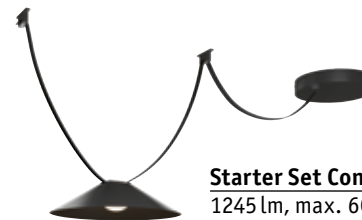
## ULine starter sets

Your alternative with a complete lighting solution including luminaire

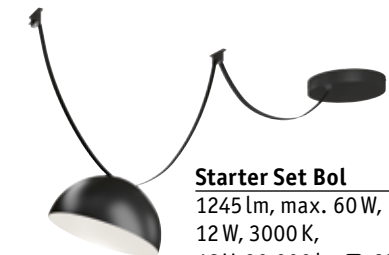
The starter sets come with a complete system including a transformer, a black 5 m belt and a Cone or Bol pendant luminaire.

You can customise the sets with additional luminaires and holders. But take care not to exceed the total output possible of 60 watts with the luminaires.

To check this, simply add up the wattage of your luminaires. If the total is less than 60 watts, everything is perfectly balanced. If you need more luminaires, it is better to start your system planning with the 150 W installation set. This allows you to install luminaires with a total output of 150 watts.



**Starter Set Cone**  
 1245 lm, max. 60 W,  
 12 W, 3000 K,  
 48 V, 30.000 h, 60 VA  
 90 ø350 mm  
 94632



**Starter Set Bol**  
 1245 lm, max. 60 W,  
 12 W, 3000 K,  
 48 V, 30.000 h, 60 VA  
 160 ø300 mm  
 94633



## Uline belts

### Variety for customised lighting scenarios

The highlight of the belts is the internal power supply, which makes the power supply to all the luminaires invisible – no matter where they are positioned!

Made from first-class Dacron, these 2.1 cm wide belts not only offer outstanding tear resistance, but also remarkable durability.

They can be shortened with scissors if necessary and are easy to clean thanks to their coating.

All belts include two end caps for an aesthetic finish.

Choose between two belt lengths (5 m and 10 m) and be inspired by five appealing colours – from stylish black to vibrant orange, which is guaranteed to attract everyone's attention.



**Orange**      **Black**      **Green**      **Grey**      **Terracotta**

	Orange	Black	Green	Grey	Terracotta
Watts	max. 150 W	max. 150 W	max. 150 W	max. 150 W	max. 150 W
∅2.8 ↔21 mm					
Length 5 m	94620	94618	94638	94634	94636
Length 10 m	94621	94619	94639	94635	94637



🛒 **Get the Look:** 1x Installation Set 150 W 94629, 1x Belt green 94639, 2x Universal Fixture 94624, 5x Ball 94616

## Uline luminaires

### Clear design meets function

The high-quality ULine luminaires can be easily attached to the belt using the click-and-connect function, as each luminaire is equipped with a snap-in belt connector.

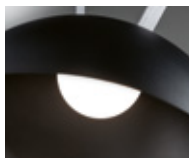
You can remove the luminaires at any time, reposition them and add new ones as you wish.

The clear and timeless design of the luminaires enhances your rooms and brings light exactly where you need it.

All luminaires are equipped with efficient LED technology and emit a pleasant warm white light with 3000 Kelvin.

Choose luminaires that meet your needs: Do you want targeted light direction? Then the Ronde spot is just the thing for you! Or do you prefer wider illumination? Then the Bol or Cone luminaires are the perfect choice. Maybe you're looking for something long and elegant? You'll love the Light Bar!

And if you prefer a luminaire that illuminates in every direction, then the Ball luminaire is your ideal choice.



#### ULine Light Bar

2035 lm, 18,5 W  
3000 K, 30.000 h  
⇅26 ⇄650 ↗29 mm

94613

🌀 Black  
📏 Plastic, aluminium

#### ULine Bol

1245 lm, 12 W  
3000 K, 30.000 h  
⇅160 ø300 mm

94614

🌀 Black  
📏 Plastic, aluminium



#### ULine Cone

1245 lm, 12 W  
3000 K, 30.000 h  
⇅90 ø350 mm

94615

🌀 Black  
📏 Plastic, aluminium

#### ULine Ball

840 lm, 8 W  
3000 K, 30.000 h  
⇅152 ø150 mm

94616

🌀 White  
📏 Plastic, aluminium

#### ULine Ronde

745 lm, 7 W  
3000 K, 30.000 h  
⇅110 ø85 mm

94617

🌀 Black  
📏 Plastic, aluminium



🛒 **Get the Look:** Left: 1x Installation Set 60 W 94628, 4x Ball 94616, 1x Universal Fixture 94624  
Right: 1x Starter Set Bol 94633, 2x Universal Fixture 94624



🛒 **Get the Look:** Left: 1x Installation Set 60 W 94628, 1x Belt black 94618,  
1x Straight Fixture 94622, 2x Cone 94615  
Right: 1x Installation Set 60 W 94628, 1x Belt black 94618,  
1x Straight Fixture 94622, 6x Ball 94616

## Uline accessories

For creative lighting installations in any size space



Holders for installations on and above walls, ceilings and floors



### Uline Universal Fixture

∅35 ∅60 mm

94624

🔗 Black  
🧱 Plastic, aluminium



### 2x Uline Straight Fixture

∅30 ↔12 ↗72 mm

94622

🔗 Black  
🧱 Aluminium



### Uline Ceiling Cover

∅27 ∅85 mm

94627

🔗 Black  
🧱 Plastic, aluminium



Clamp for loop installations and as strain relief



### 2x Uline Clamp

∅16 ↔45 ↗15 mm

94623

🔗 Black  
🧱 Aluminium



Pendant holder that can be shortened – ideal for installation in particularly high rooms



### Uline Suspension 2 m

∅21 ↔45 ↗15 mm

94626

🔗 Black  
🧱 Plastic, aluminium



🛒 **Get the Look:** 1x Installation Set 60 W 94628, 1x Belt orange 94620, 2x Universal Fixture 94624, 2x Bol 94614

Pendant adapter for power infeed into the belt – can bridge a distance of up to 2 m from transformer housing to belt



### Uline Cable Feed 2 m

max. 150 W ∅20 ↔47 ↗26 mm

94625

🔗 Black  
🧱 Plastic, aluminium



# Plan your very own system!



Scan the QR code and discover our inspiring product video that shows you how to get the most out of our system!  
[www.paulmann.com/ULine-info/](http://www.paulmann.com/ULine-info/)



[www.paulmann.com/ULine-yt/](http://www.paulmann.com/ULine-yt/)



[www.paulmann.com](http://www.paulmann.com)

Paulmann Licht GmbH | Quezinger Feld 2 | 31832 Springe/Germany